



FORKY CHAIN CONVEYOR

RUD's innovative Drag Chain Conveyors featuring our FORKY® forged link system in single and dual strand designs.

RELIABILITY

- Sealed enclosed casing designs.
- Wear resistant manganese wear rails.
- Highly wear resistant components.
- Full range of motor and drive solutions.
- Environmentally friendly designs.

FLEXIBILITY

- Horizontal, vertical and inclined options.
- Combined geometry options available.
- En masse or drag configurations.
- A range of quality geared motor options available.

PRODUCTIVITY

- Low energy consumption.
- Optimal blade designs to suit specific application.

DURABILITY

- Fully integrated system design.
- Chain solutions in a range of sizes.
- Case hardened machined chain bores provide longer life.

SERVICEABILITY

- Easily accessible maintenance hatches.
- Pin design for simple assembly of chain.
- Visible wear indicators.
- Maintenance planning can be accurately projected.

**GERMAN QUALITY
AND ENGINEERING**

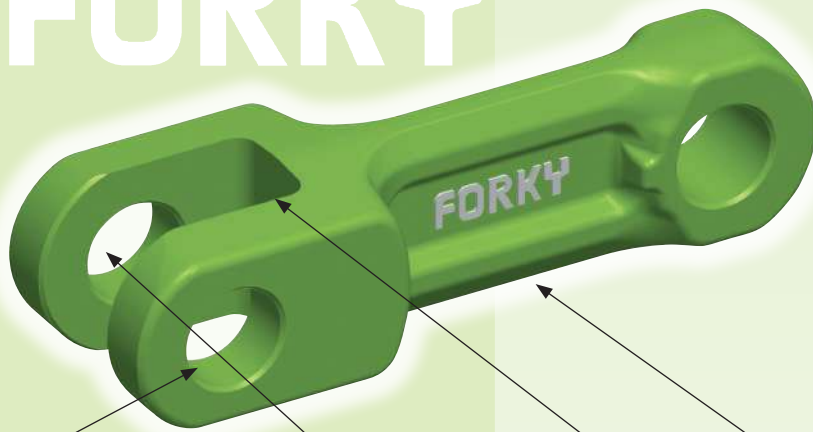


SUITABLE FOR USE IN A WIDE RANGE OF APPLICATIONS

- | | | | |
|------------|--------------|----------------------|---------------------------|
| ■ Minerals | ■ Biomass | ■ Coal | ■ En masse conveying |
| ■ Fly Ash | ■ Wood waste | ■ Mineral processing | ■ Drag chain applications |

Features of RUD FORKY® Chain Conveyor Systems

FORKY



Deburred holes

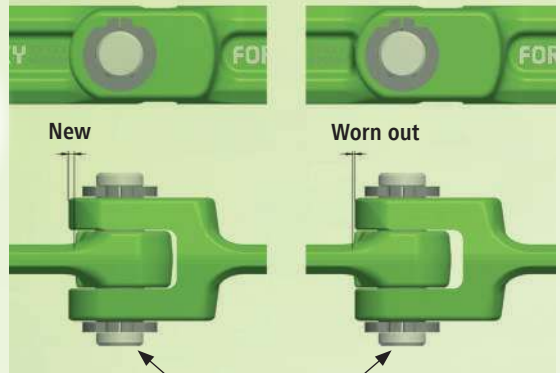
Paraxial holes with an accurate pitch

Extra large radii

Stress-optimised link design

Visible wear indicator

Optimised performance for conveyor systems



RUD QUALITY FORKY CHAIN

- Drop forged for strength.
- Calibrated bores for accurate operation.
- Case hardened for long life.
- CNC machined bores provide accurate tolerances.

VISIBLE WEAR INDICATORS

- External tab to provide chain wear dimension.
- No-go contact to indicate when chain should be replaced.
- Capability to measure chain wear.
- Easy monitoring of maintenance requirements.

FORKY WHEELS

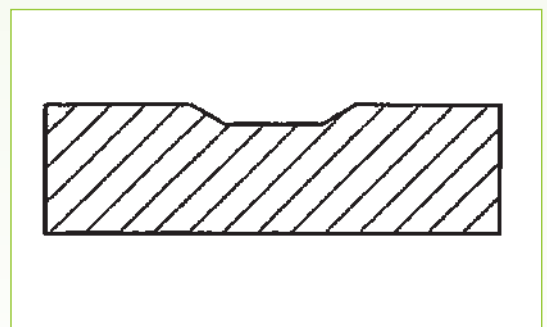
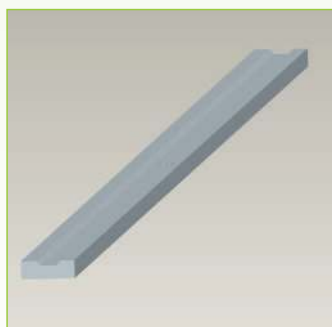
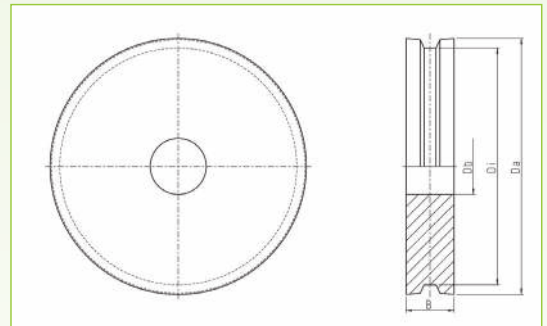
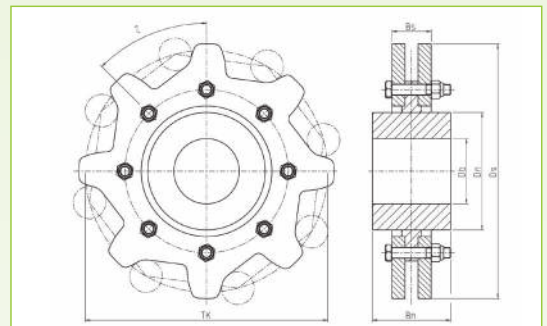
- Hardened tooth segments.
- Matched components for long life.

FORKY GUIDE WHEELS

- Return idlers.
- Hardened guide wheels support RUD quality chain.
- Optimum design for longer life.

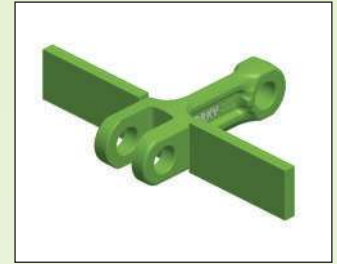
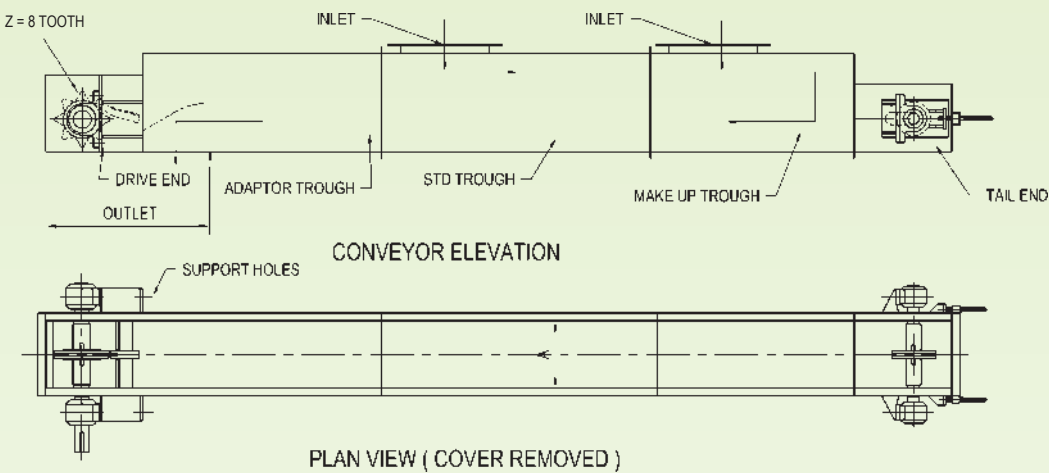
MANGANESE WEAR RAILS

- Quality manganese wear rails provide longer life.
- Incorporates V groove for optimum running performance.

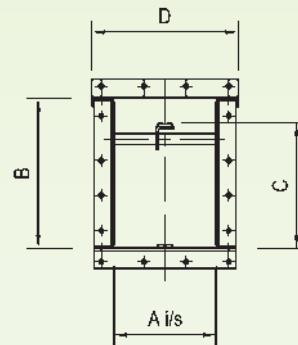


RUD quality components provide reliable solutions to reduce your maintenance and operating costs

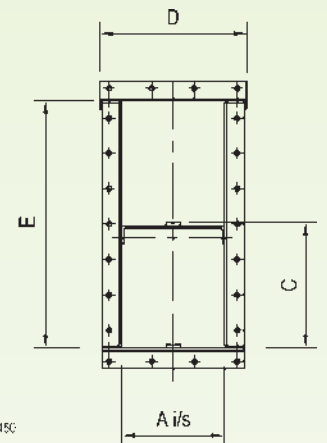
RUD FORKY SINGLE STRAND - HORIZONTAL CONVEYOR



Conveyor Type	A	B	C	D	E
RKT 250x250	250	450	355	380	700
RKT 315x290	315	450	355	445	700
RKT 400x290	400	450	355	530	700
RKT 400x360	400	510	430	530	850
RKT 500x360	500	510	430	630	850
RKT 500x450	500	600	515	630	1000
RKT 630x450	630	600	515	760	1000

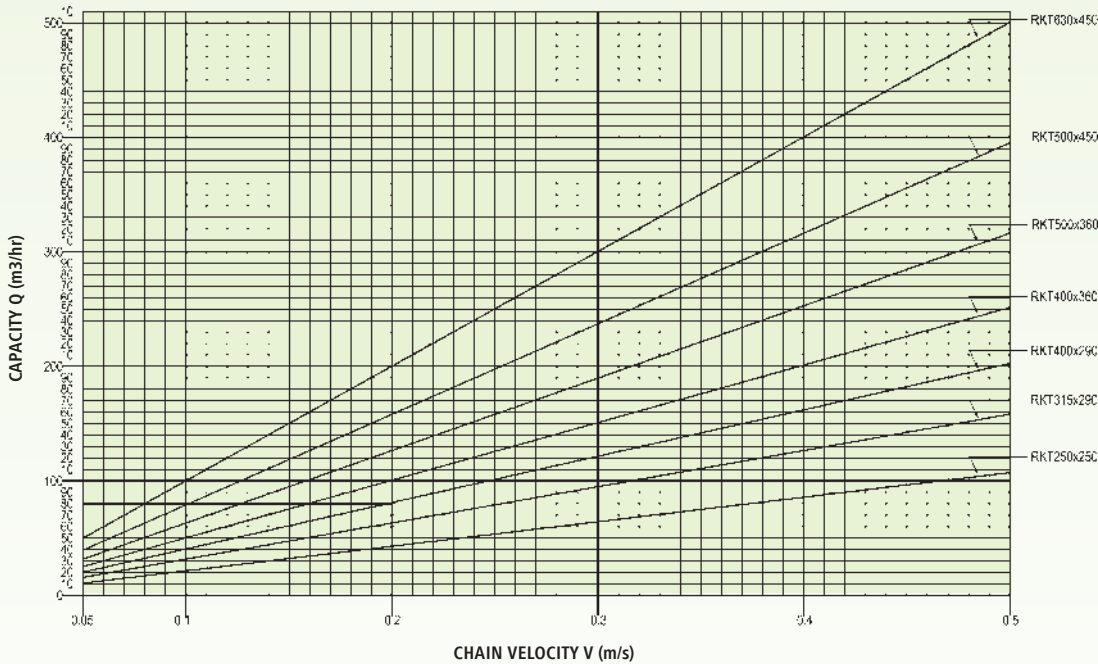


SINGLE WAY CONVEYOR



TWO WAY CONVEYOR

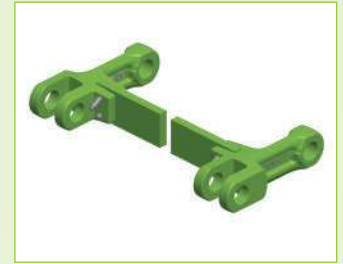
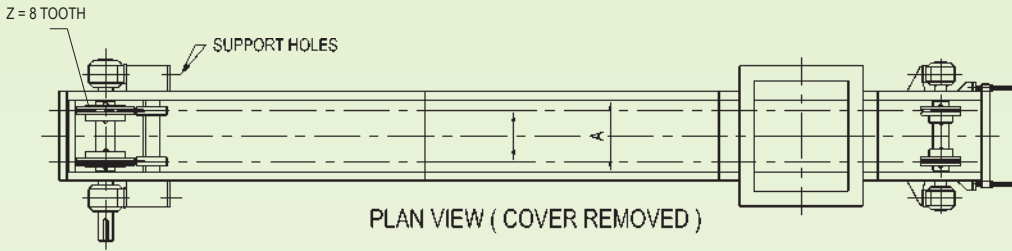
CONVEYOR SELECTION GRAPH



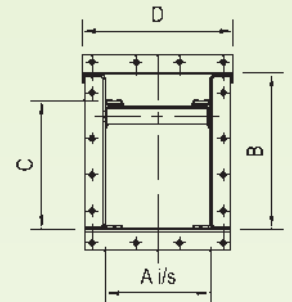
SELECTION PROCESS

- 1 Select capacity in m³h on y axis.
- 2 Select chain velocity on x axis.
- 3 The line closest to intersection is the RUD recommended system.
- 4 Match RKT size with tables (above).
- 5 Desired speed is dependant on product characteristics.
- 6 Consult a RUD specialist (via questionnaire) for optimum speed.

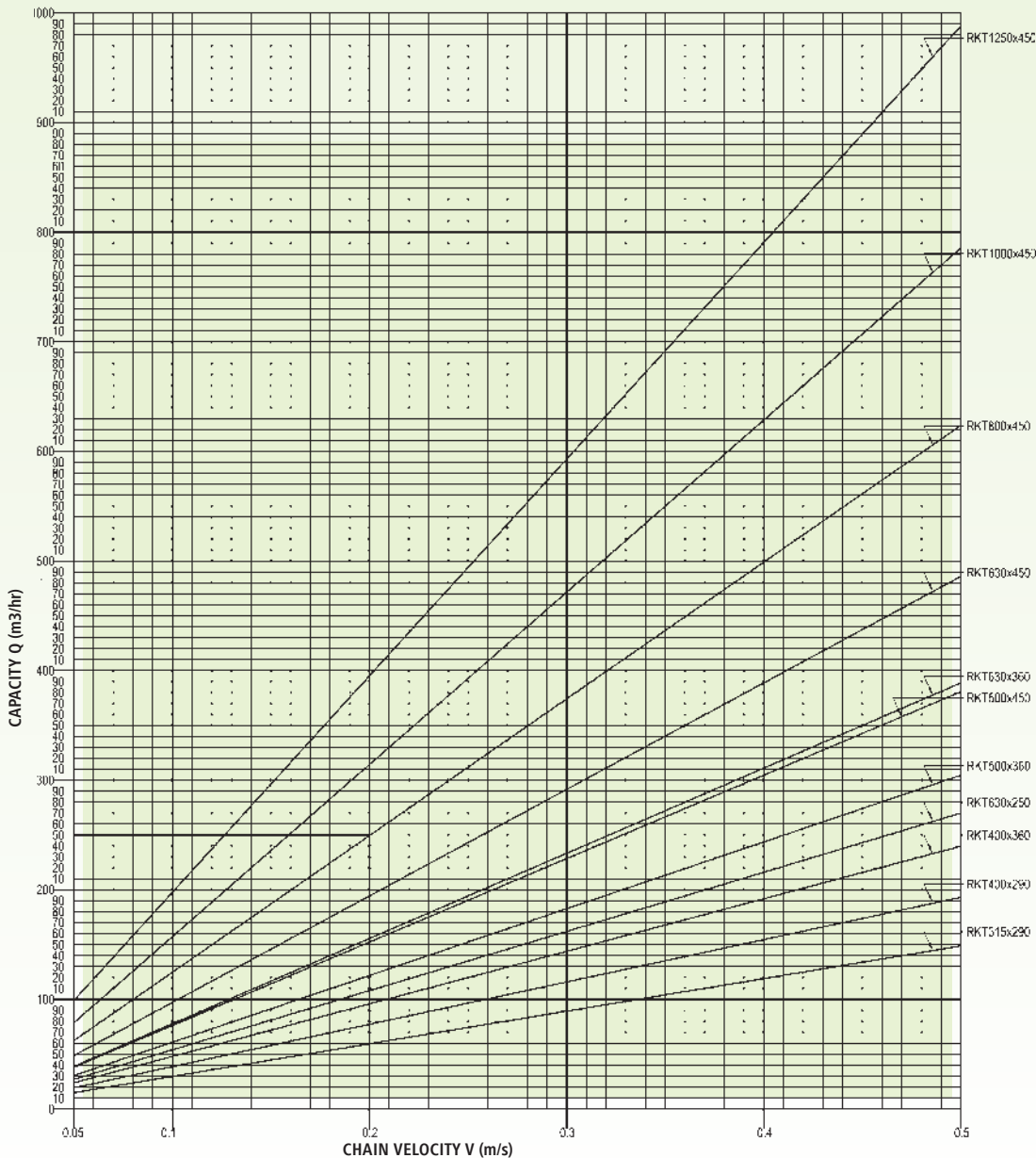
RUD FORKY TWIN STRAND - HORIZONTAL CONVEYOR



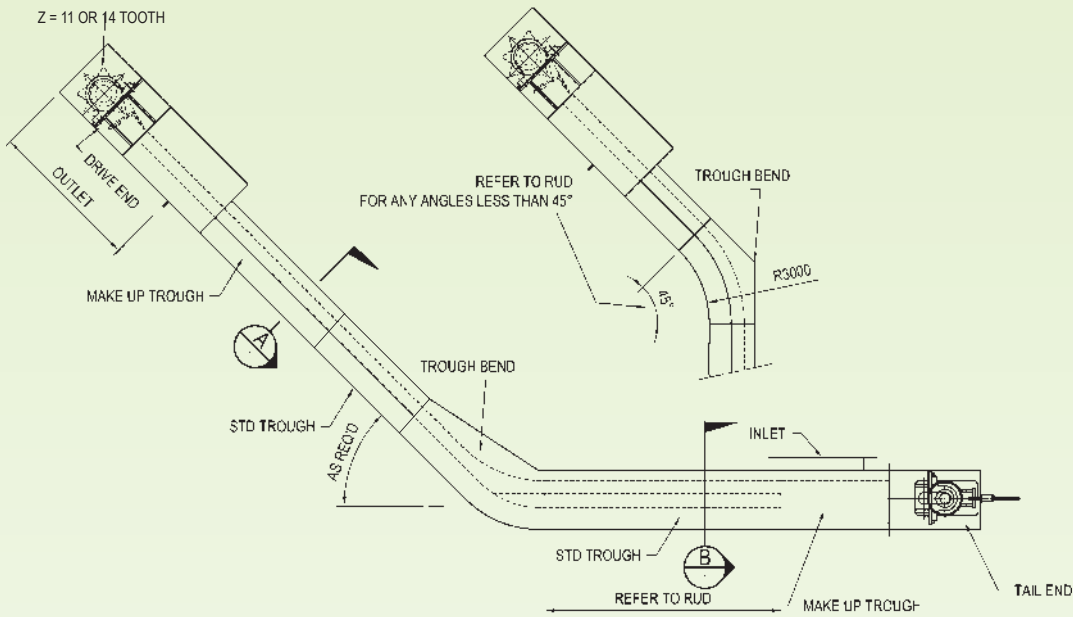
Conveyor Type	A	B	C	D	Conveyor Type	A	B	C	D
RKT 315x290	315	450	355	445	RKT 630x250	630	450	355	760
RKT 400x290	400	450	355	530	RKT 630x360	630	510	430	760
RKT 400x360	400	510	430	530	RKT 630x450	630	600	515	760
RKT 500x360	500	510	430	630	RKT 800x450	800	600	515	930
RKT 500x450	500	600	515	630	RKT 1000x450	1000	600	515	1130
					RKT 1250x450	1250	600	515	1380



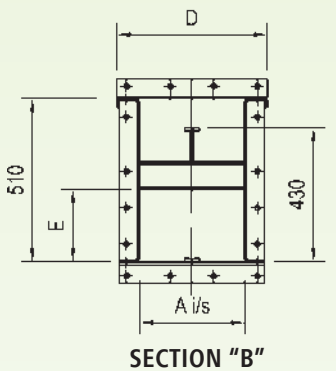
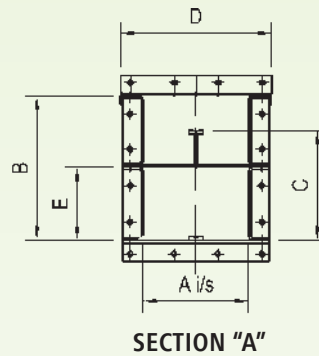
CONVEYOR SELECTION GRAPH



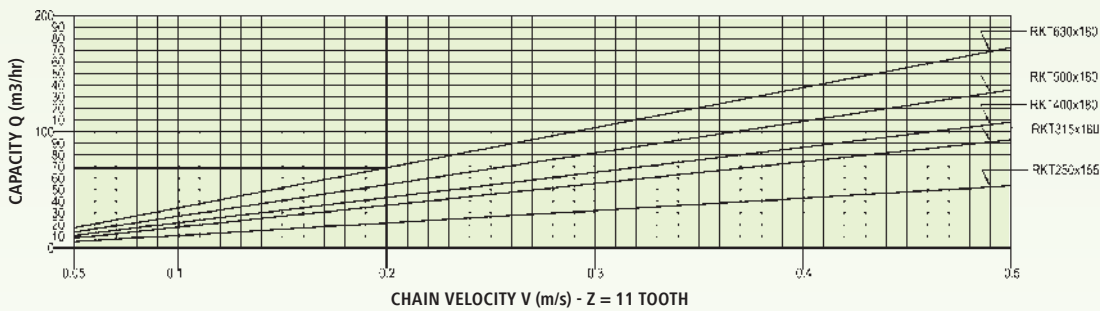
RUD FORKY SINGLE STRAND - HORIZONTAL / INCLINED CONVEYOR



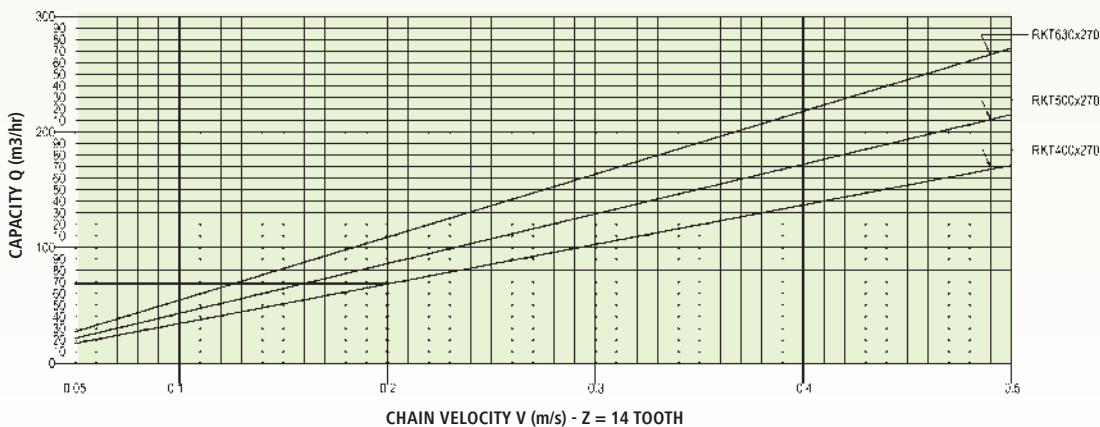
Conveyor Type	A	B	C	D	E	Z
RKT 250x155	250	336	260	380	150	11
RKT 315x180	315	416	320	445	180	11
RKT 400x180	400	416	320	530	180	11
RKT 500x180	500	416	320	630	180	11
RKT 630x180	630	416	320	760	180	11
RKT 400x270	400	590	500	530	270	14
RKT 500x270	500	590	500	630	270	14
RKT 630x270	630	590	500	760	270	14

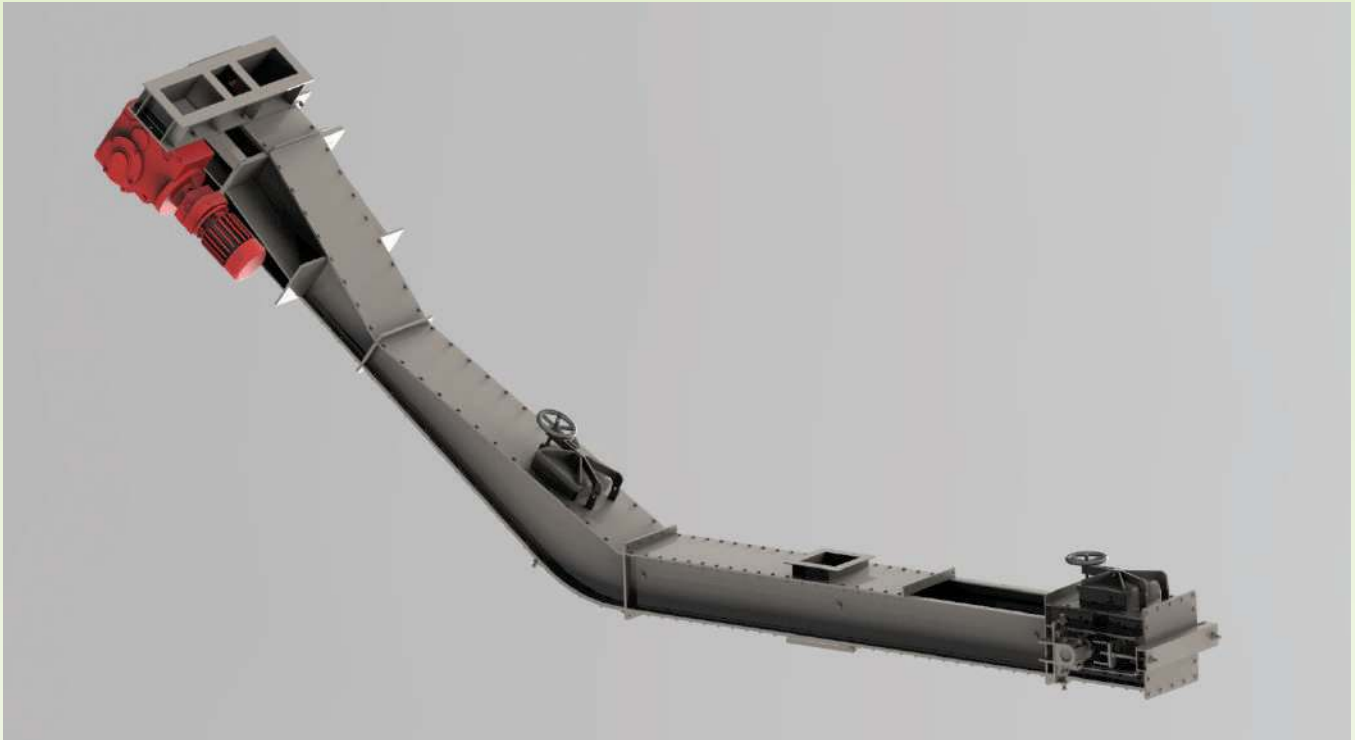


STANDARD CONVEYOR SELECTION GRAPH

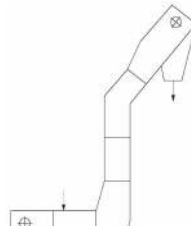
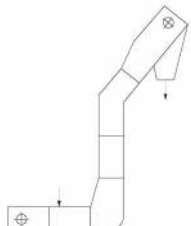
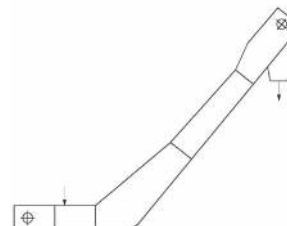
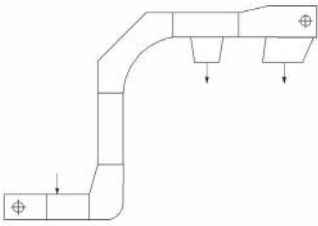
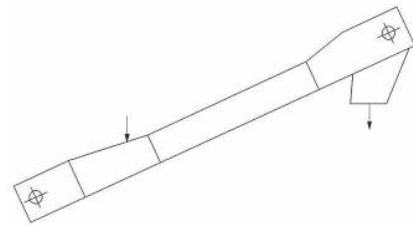
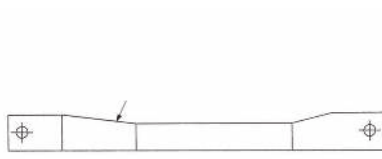
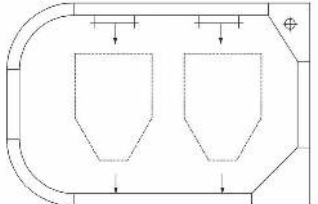
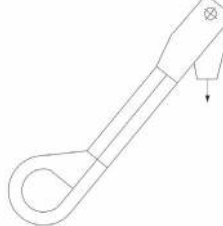
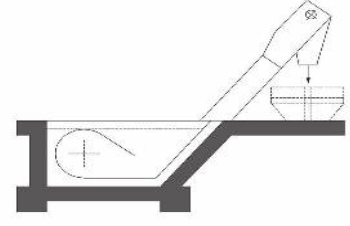


HIGH VOLUME CONVEYOR SELECTION GRAPH





COMMONLY USED ARRANGEMENTS FOR RUD FORK CHAIN CONVEYORS

 <p>Horizontal/vertical</p>	 <p>Horizontal/vertical/inclined</p>	 <p>Horizontal/inclined</p>
 <p>Conveying from road receivable hopper</p>	 <p>Inclined</p>	 <p>Horizontal</p>
 <p>Circuit</p>	 <p>Loop boot</p>	 <p>Submerged</p>