

Load Ring VRBS-FIX welded on boltable plate VRBG-50t

Artikel-Nr: 7909951



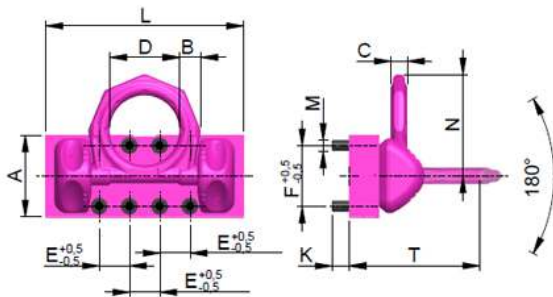
Load ring threaded with full working load in all directions and split force introduction.

- Split force introduction due to multiple point fixing.
- Suspension ring pivots 180°.
- 100% WLL at 90 degrees in the load ring plane possible.
- Clear marking of the minimum WLL for all loading directions.
- Patented markings for easy determination for withdraw of service.
- Original RUD bolt available as spare part.
- Component according to the test criterias of BG/DGUV "GS-OA-15-04".
- Assembly with allen key possible.
- Hand tightening with appropriate wrench is sufficient for a singular lift. Please observe torque instructions when lifting point is permanently installed resp. at constant swivelling operations and tilting/ turning actions.

Other important RUD specific information and specialities to our RUD lifting points can be found in the specific user instruction.

Load Ring VRBS-FIX welded on boltable plate VRBG-50t

Artikel-Nr: 7909951



weight	204.00 kg	449.74 lbs
Nominal WLL	50000 kg	110000 lbs
T	430 mm	16-15/16"
A	270 mm	10-5/8"
B	70 mm	2-3/4"
C	55 mm	2-5/32"
D	230 mm	9-1/16"
E	100 mm	3-15/16"
F	200 mm	7-7/8"
K	60 mm	2-3/8"
L	650 mm	25-5/8"
M	M36 mm	M36
N	335 mm	13-3/16"