

Nut DIN 980-V M22 crack detected

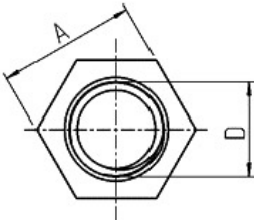
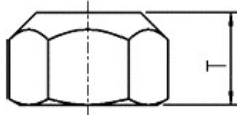
Artikel-Nr: 7998943



100% crack detected, prevailing torque hexagon nut type according to DIN 980 - V (all-metal design) with a zinc - plated surface. With a plain washer (extra item) suitable for the assembly of lifting points with long threaded bolts for example in through holes.

Nut DIN 980-V M22 crack detected

Artikel-Nr: 7998943



A	32 mm	1-1/4"
D	M22 mm	M22
weight	0.07 kg	0.15 lbs
T	22 mm	7/8"