

Washer EN 14399-T6 - 50 (for M48)

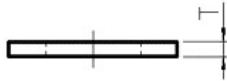
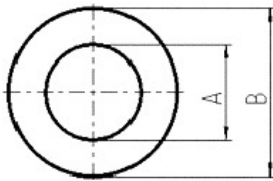
Artikel-Nr: 7991338



Washer according to EN 14399-T6 (DIN 6916), Surface: zinc - plated With a crack detected hexagon nut (extra item) suitable for the assembly of lifting points with long threaded bolts for example in through holes.

Washer EN 14399-T6 - 50 (for M48)

Artikel-Nr: 7991338



weight	0.23 kg	0.66 lbs
T	8 mm	5/16"
A	50 mm	1-31/32"
B	92 mm	3-5/8"