

Washer EN 14399-T6 - 43 (for M42)

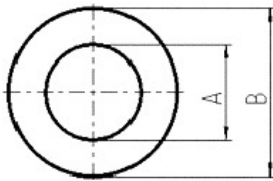
Artikel-Nr: 8801028



Washer according to EN 14399-T6 (DIN 6916), Surface: zinc - plated With a crack detected hexagon nut (extra item) suitable for the assembly of lifting points with long threaded bolts for example in through holes.

Washer EN 14399-T6 - 43 (for M42)

Artikel-Nr: 8801028



weight	0.20 kg	0.4 lbs
T	7 mm	9/32"
A	43 mm	1-45/64"
B	78 mm	3-5/64"