

## Washer EN 14399-T6 - 31 (for M30)

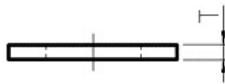
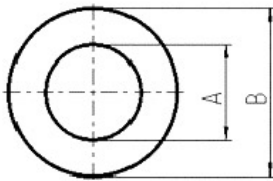
Artikel-Nr: 8801026



Washer according to EN 14399-T6 (DIN 6916), Surface: zinc - plated With a crack detected hexagon nut (extra item) suitable for the assembly of lifting points with long threaded bolts for example in through holes.

## Washer EN 14399-T6 - 31 (for M30)

Artikel-Nr: 8801026



<b>weight</b>	0.06 kg	0.14 lbs
<b>T</b>	5 mm	13/64"
<b>A</b>	31 mm	1-7/32"
<b>B</b>	56 mm	2-13/64"