

Washer EN 14399-T6 - 28 (for M27)

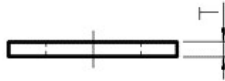
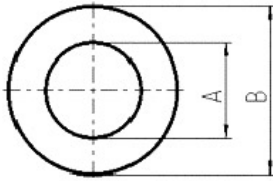
Artikel-Nr: 8801592



Washer according to EN 14399-T6 (DIN 6916), Surface: zinc - plated With a crack detected hexagon nut (extra item) suitable for the assembly of lifting points with long threaded bolts for example in through holes.

Washer EN 14399-T6 - 28 (for M27)

Artikel-Nr: 8801592



weight	0.05 kg	0.11 lbs
T	5 mm	13/64"
A	28 mm	1-1/8"
B	50 mm	1-31/32"