

## Washer EN 14399-T6 - 23 (for M22)

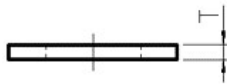
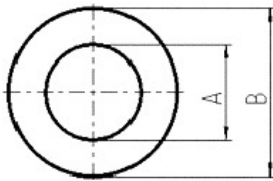
Artikel-Nr: 8801338



Washer according to EN 14399-T6 (DIN 6916), Surface: zinc - plated With a crack detected hexagon nut (extra item) suitable for the assembly of lifting points with long threaded bolts for example in through holes.

## Washer EN 14399-T6 - 23 (for M22)

Artikel-Nr: 8801338



<b>weight</b>	0.02 kg	0.04 lbs
<b>T</b>	4.0 mm	5/32"
<b>A</b>	23 mm	29/32"
<b>B</b>	39 mm	1-9/16"