

Washer EN 14399-T6 - 17 (for M16)

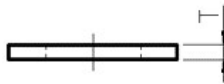
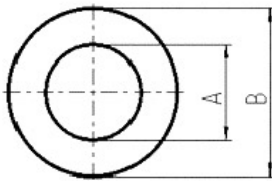
Artikel-Nr: 8801022



Washer according to EN 14399-T6 (DIN 6916), Surface: zinc - plated With a crack detected hexagon nut (extra item) suitable for the assembly of lifting points with long threaded bolts for example in through holes.

Washer EN 14399-T6 - 17 (for M16)

Artikel-Nr: 8801022



weight	0.02 kg	0.03 lbs
T	4 mm	5/32"
A	17 mm	43/64"
B	30 mm	1-3/16"