

## Eye Plate-threaded VRBG-16t

Artikel-Nr: 7993255



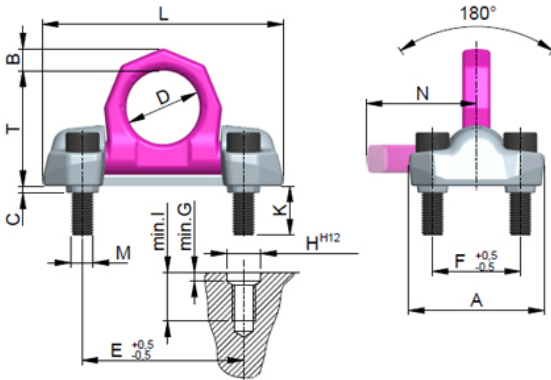
Load ring threaded with full working load in all directions and split force introduction.

- Split force introduction due to multiple point fixing.
- Suspension ring pivots 180°.
- 100% WLL at 90 degrees in the load ring plane possible.
- Clear marking of the minimum WLL for all loading directions.
- Patented markings for easy determination for withdraw of service.
- Original RUD bolt available as spare part.
- Component according to the test criterias of BG/DGUV "GS-OA-15-04".
- Assembly with flat / ring wrench or allen key possible.
- Hand tightening with appropriate wrench is sufficient for a singular lift.
- Please observe torque instructions when lifting point is permanently installed resp. at constant swivelling operations and tilting/ turning actions.

Other important RUD specific information and specialities to our RUD lifting points can be found in the specific user instruction.

## Eye Plate-threaded VRBG-16t

Artikel-Nr: 7993255



<b>weight</b>	11.37 kg	25.07 lbs
<b>Nominal WLL</b>	16000 kg	35300 lbs
<b>T</b>	131 mm	5-3/16"
<b>A</b>	170 mm	6-11/16"
<b>B</b>	30 mm	1-3/16"
<b>C</b>	8 mm	5/16"
<b>D</b>	90 mm	3-17/32"
<b>E</b>	198 mm	7-7/8"
<b>F</b>	104 mm	4-3/32"
<b>G</b>	10 mm	3/8"
<b>H</b>	46 mm	1-13/16"
<b>I</b>	70 mm	2-3/4"
<b>K</b>	63 mm	2-15/32"
<b>L</b>	270 mm	10-5/8"
<b>M</b>	M30 mm	M30
<b>N</b>	134 mm	5-9/32"