

Load Ring VRBS welded on boltable plate VRBG-31,5t

Artikel-Nr: 7985866



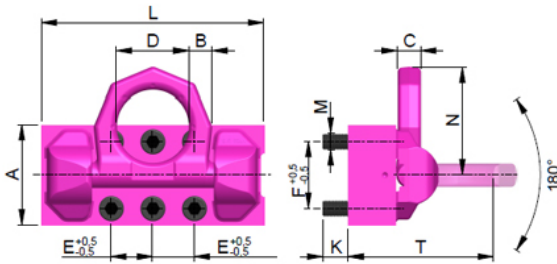
Load ring threaded with full working load in all directions and split force introduction.

- Split force introduction due to multiple point fixing.
- Suspension ring pivots 180°.
- 100% WLL at 90 degrees in the load ring plane possible.
- Clear marking of the minimum WLL for all loading directions.
- Patented markings for easy determination for withdraw of service.
- Original RUD bolt available as spare part.
- Component according to the test criterias of BG/DGUV "GS-OA-15-04".
- Assembly with allen key possible.
- Hand tightening with appropriate wrench is sufficient for a singular lift. Please observe torque instructions when lifting point is permanently installed resp. at constant swivelling operations and tilting/ turning actions.

Other important RUD specific information and specialities to our RUD lifting points can be found in the specific user instruction.

Load Ring VRBS welded on boltable plate VRBG-31,5t

Artikel-Nr: 7985866



weight 67.50 kg 148.81 lbs

Nominal WLL 31500 kg 69300 lbs

T 265 mm 10-7/16"

A 180 mm 7-1/16"

B 42 mm 1-21/32"

C 42 mm 1-21/32"

D 130 mm 5-1/8"

E 75 mm 2-15/16"

F 120 mm 4-3/4"

K 46 mm 1-13/16"

L 400 mm 15-3/4"

M M30 mm M30

N 195 mm 7-11/16"