

## Eye nut RM - M30

Artikel-Nr: 55438



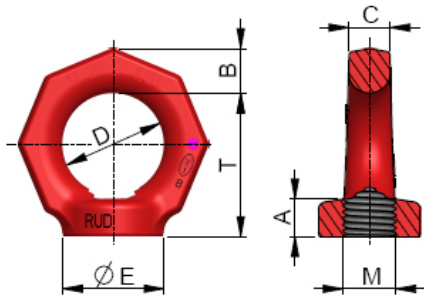
For the RUD RM - eye nuts, the threaded connector component must be of at least quality grade 8.8

- Considerably higher WLL (in comparison to DIN 582) at vertical load.
- Large thread and WLL range (M6-M48, 0.1 t – 8 t).
- Clear marking of the minimum WLL for all loading directions.
- Quick and easy installation with just one bolt connection.

Other important RUD specific information and specialities to our RUD lifting points can be found in the specific user instruction.

## Eye nut RM - M30

Artikel-Nr: 55438



<b>weight</b>	1.32 kg	2.91 lbs
<b>Nominal WLL</b>	3000 kg	6600 lbs
<b>T</b>	85 mm	3-11/32"
<b>A</b>	25 mm	63/64"
<b>B</b>	26 mm	1"
<b>C</b>	24 mm	15/16"
<b>D</b>	60 mm	2-3/8"
<b>E</b>	60 mm	2-3/8"
<b>M</b>	M30 mm	M30