

W-ABA 1.6t - lifting point for welding, loadable from any direction

Artikel-Nr: 7900352



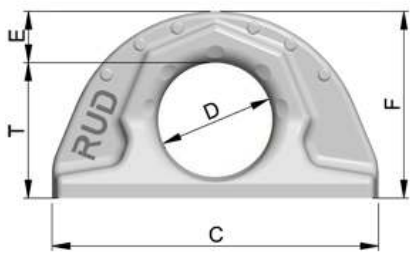
Weldable lifting point, full working load in all directions.

- Forged, no rattling noise or shaking even at strong vibrations or shock loads, simple connection of lifting means possible.
- Clear marking of the minimum WLL for all loading directions.
- Requirements of the DIN 18800 are fulfilled by the weld arrangement (circular fillet weld), this means non occurrence of contact/crevice corrosion due to the endless weld seam (therefore suitable for outdoor constructions). Material of weld-on-block 1.6541 (23MnNiCrMo52) (please observe user instruction).
- Patented markings for easy determination for withdraw of service.
- Tested and certified by DGUV, Testing specifications: GS-OA-15-04:2012-05, Certificate-Nr.: OA 1451020
- Phosphated surface.
- Significant product characteristics of the ABA are subject to property right claims.
- Simple and fast welding installation.
- Confirmation of the low temperature ability to -40°C by the notch bar impact test is possible upon request (before order is placed).
- The WLL statement corresponds to the minimum WLL in all loading directions. Higher WLL possible when location and installation is optimised (compare WLL chart / user instruction).

Welding should only be carried out by qualified persons according to ISO 9606-1. Other important RUD specific information and specialities to our RUD lifting points can be found in the specific user instruction.

W-ABA 1.6t - lifting point for welding, loadable from any direction

Artikel-Nr: 7900352



weight	0.45 kg	0.99 lbs
Nominal WLL	1600 kg	3520 lbs
T	42 mm	1-21/32"
A	30 mm	1-3/16"
B	16 mm	5/8"
C	100 mm	3-15/16"
D	35 mm	1-3/8"
E	16 mm	5/8"
F	57 mm	2-1/4"