

W-ABA 3.2t - lifting point for welding, loadable from any direction

Artikel-Nr: 7900353



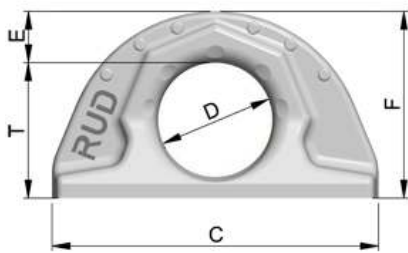
Weldable lifting point, full working load in all directions.

- Forged, no rattling noise or shaking even at strong vibrations or shock loads, simple connection of lifting means possible.
- Clear marking of the minimum WLL for all loading directions.
- Requirements of the DIN 18800 are fulfilled by the weld arrangement (circular fillet weld), this means non occurrence of contact/crevice corrosion due to the endless weld seam (therefore suitable for outdoor constructions). Material of weld-on-block 1.6541 (23MnNiCrMo52) (please observe user instruction).
- Patented markings for easy determination for withdraw of service.
- Tested and certified by DGUV, Testing specifications: GS-OA-15-04:2012-05, Certificate-Nr.: OA 1451020
- Phosphated surface.
- Significant product characteristics of the ABA are subject to property right claims.
- Simple and fast welding installation.
- Confirmation of the low temperature ability to -40°C by the notch bar impact test is possible upon request (before order is placed).
- The WLL statement corresponds to the minimum WLL in all loading directions. Higher WLL possible when location and installation is optimised (compare WLL chart / user instruction).

Welding should only be carried out by qualified persons according to ISO 9606-1. Other important RUD specific information and specialities to our RUD lifting points can be found in the specific user instruction.

W-ABA 3.2t - lifting point for welding, loadable from any direction

Artikel-Nr: 7900353



weight	1.15 kg	2.54 lbs
Nominal WLL	3200 kg	7050 lbs
T	59 mm	2-15/16"
A	41 mm	1-5/8"
B	23 mm	29/32"
C	137 mm	5-3/8"
D	50 mm	1-31/32"
E	21 mm	13/16"
F	80 mm	3-1/8"