

## W-ABA 31.5t - lifting point for welding, loadable from any direction

Artikel-Nr: 7902175



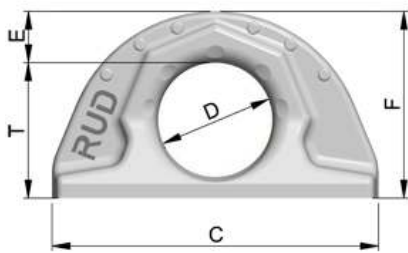
Weldable lifting point, full working load in all directions.

- Forged, no rattling noise or shaking even at strong vibrations or shock loads, simple connection of lifting means possible.
- Clear marking of the minimum WLL for all loading directions.
- Requirements of the DIN 18800 are fulfilled by the weld arrangement (circular fillet weld), this means non occurrence of contact/crevice corrosion due to the endless weld seam (therefore suitable for outdoor constructions). Material of weld-on-block 1.6541 (23MnNiCrMo52) (please observe user instruction).
- Patented markings for easy determination for withdraw of service.
- Tested and certified by DGUV, Testing specifications: GS-OA-15-04:2012-05, Certificate-Nr.: OA 1451020
- Phosphated surface.
- Significant product characteristics of the ABA are subject to property right claims.
- Simple and fast welding installation.
- Confirmation of the low temperature ability to  $-40^{\circ}\text{C}$  by the notch bar impact test is possible upon request (before order is placed).
- The WLL statement corresponds to the minimum WLL in all loading directions. Higher WLL possible when location and installation is optimised (compare WLL chart / user instruction).

Welding should only be carried out by qualified persons according to ISO 9606-1. Other important RUD specific information and specialities to our RUD lifting points can be found in the specific user instruction.

## W-ABA 31.5t - lifting point for welding, loadable from any direction

Artikel-Nr: 7902175



<b>weight</b>	18.33 kg	40.41 lbs
<b>Nominal WLL</b>	31500 kg	69300 lbs
<b>T</b>	154 mm	6-1/16"
<b>A</b>	108 mm	4-1/4"
<b>B</b>	64 mm	2-1/2"
<b>C</b>	320 mm	12-19/32"
<b>D</b>	130 mm	5-1/8"
<b>E</b>	50 mm	1-31/32"
<b>F</b>	204 mm	8-1/32"