

RoRo-Lashingpoint LP 10.000 daN , for low temperature -40°C

Artikel-Nr: 7983031

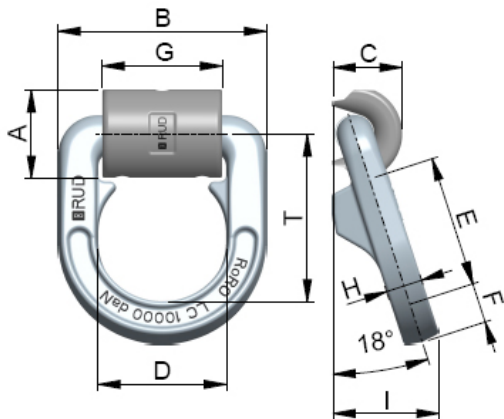


- Lashing- and connection device at road vehicles for sea transport on Ro/Ro ships.
- 100% crack detected
- acc. to EN 29367-2, Resistance characteristics with a proof force = 120 kN and a breaking force = 200 kN
- Surface: phosphated
- Suitable for all common lashing means

Welding should only be carried out by qualified persons according to ISO 9606-1. Other important RUD specific information and specialities to our RUD lifting points can be found in the specific user instruction.

RoRo-Lashingpoint LP 10.000 daN , for low temperature -40°C

Artikel-Nr: 7983031



weight	2.30 kg	5.07 lbs
T	105 mm	4-1/8"
A	55 mm	2-5/32"
B	130 mm	5-1/8"
C	43 mm	1-11/16"
D	80 mm	3-1/8"
E	82 mm	3-1/4"
F	25 mm	63/64"
G	75 mm	2-15/16"
H	23 mm	29/32"
I	66 mm	2-5/8"
Lashing capacity	10000 daN	null