

## Lashing point SLP 10000 daN

Artikel-Nr: 7903370



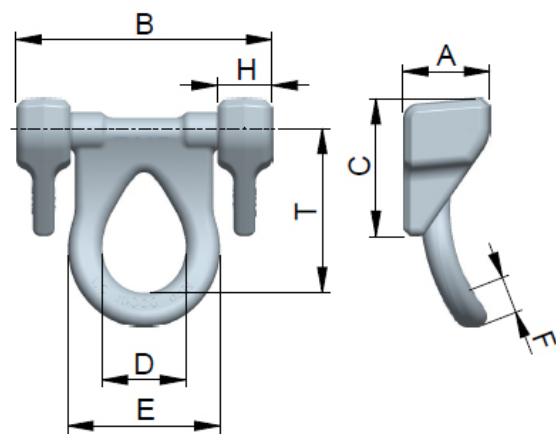
Weld-on lashing point with full Lashing Capacity in all directions. Lateral mounting and suitable for wide loads.

- Clear marking of the minimum lashing capacity for all loading directions. Lashing Capacity marking in daN.
- Split force introduction due to multiple point fixing.
- Suspension ring with enlarged pivoting area.
- Optimal for the lashing of oversized load.
- Simple and process safe positioning for the welding of pre-assembled components consisting of suspension ring and weld-on blocks.
- Requirements of the DIN 18800 are fulfilled by the weld arrangement (end-to-end HY weld seam), this means non occurrence of contact/crevice corrosion due to the endless weld seam. Therefore suitable for outdoor constructions. The circular weld seam HY requires only a small welding volume.
- Clamping spring works as a noise reduction and holds the suspension ring in the requested position; therefore simple hinge of lashing mean possible.
- Easy painting due to fixing of the suspension ring.
- The weld-on-block is made (forged) out of quality weldable steel.
- Significant product characteristics of the SLP are subject to property right claims.

Welding should only be carried out by qualified persons according to ISO 9606-1. Other important RUD specific information and specialities to our RUD lifting points can be found in the specific user instruction.

Lashing point SLP 10000 daN

Artikel-Nr: 7903370



weight	3.42 kg	7.54 lbs
T	115 mm	4-1/2"
A	63 mm	2-15/32"
B	185 mm	null
C	100 mm	3-15/16"
D	60 mm	2-3/8"
E	110 mm	4-11/32"
F	25 mm	63/64"
H	40 mm	1-9/16"
Lashing capacity	10000 daN	null