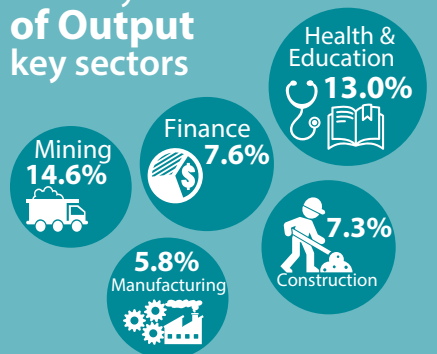


Composition of the Australian Economy

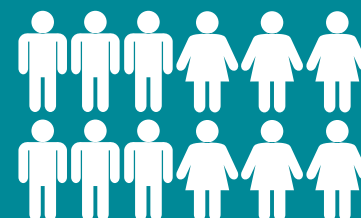
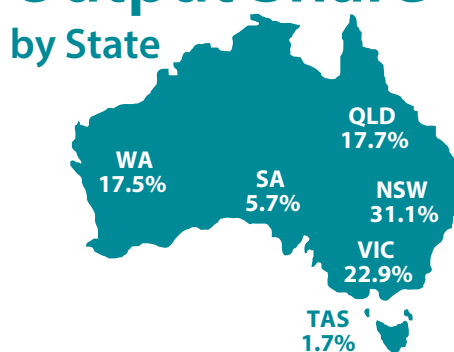
3 November 2022 SNAPSHOT



Industry Share of Output key sectors



Output Share by State



Population
25.9 million
0.9% annual growth

Export Share by type

Resources: **70.7%**
Services: **10.1%**
Rural: **10.2%**
Manufactured: **6.5%**



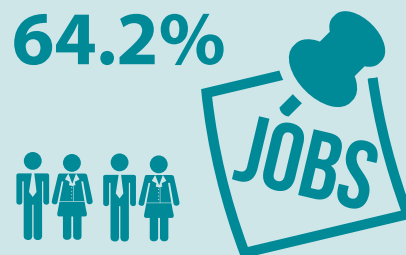
Export Share by destination

CHINA: **36.0%**
JAPAN: **12.2%**
EU: **3.6%**
KOREA: **7.1%**
US: **4.6%**
INDIA: **4.7%**



Employment to population ratio

64.2%



Average Price of Residential Dwellings
\$922,000



Household wealth

as a share of income



907%

Household debt

as a share of income

188%



Data in this snapshot are the latest available as at 2 November 2022.



RESERVE BANK OF AUSTRALIA



www.rba.gov.au



@RBAInfo



@ReserveBankAU



@ReserveBankAU



Reserve Bank of Australia